



FIRESTOP CENTRE

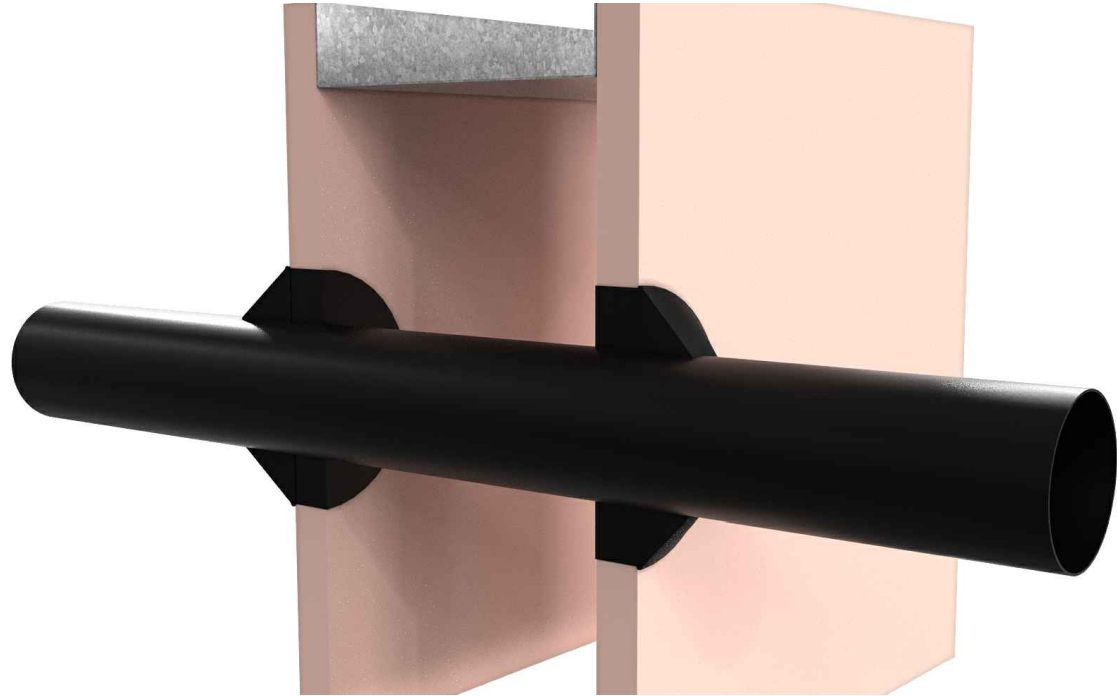
Authorised New Zealand Distributor
Ph (09) 483 4000 www.firestopcentre.co.nz

AGNI-Black in 1 x 13mm Plasterboard Wall or 90mm Concrete/Masonry/Block Wall PEX Pipe 16-32mm Max FRR -/60/60

System ID# FC887

Step-by-step installation instructions:

1. Ensure the aperture is free from dust and debris.
2. Apply 13mm deep AGNI-Black in the annular gap between the wall and the pipe, 13mm nominal (depth of lining).
3. Apply 30mm (width) x 20mm (height) AGNI-Black fillet/cone around the pipe.



Technical Information

Substrate	<ul style="list-style-type: none"> • Min. 64mm timber or steel stud wall with a minimum of one layer of 13mm (or greater) FR plasterboard on each side, with or without insulation. • Min. 90mm concrete wall
Service range	From DN16 up to DN32mm PEX pipes
Annular gap	15.8 - 25.85 mm
AGNI-Products	AGNI-Black
Protection installation	Coned - both sides of the wall

Compliance Information

Standards	AS1530.4-2014, AS4072.1-2005
FRR/FRL	DN16mm -/60/60 DN25mm -/60/45 DN32mm -/60/-
Reference	PF24143



8 Clare St Bayswater
VIC 3153, AUSTRALIA
www.agnitek.com.au

Disclaimer

Agnitek reserves the right to modify product specifications without prior notice due to its ongoing research, development & certification programme. The information in this document is provided in good faith and is intended for guidance purposes only. Any accompanying drawings are solely for illustrative purposes. Since Agnitek cannot oversee installation methods or ensure site conditions, no warranties, expressed or implied, are intended regarding the products' actual performance. We do not accept liability for any loss, damage, or injury from using this information. Please take a look at the test reports displayed on a relevant AGNI-System webpage for all compliance specifics.

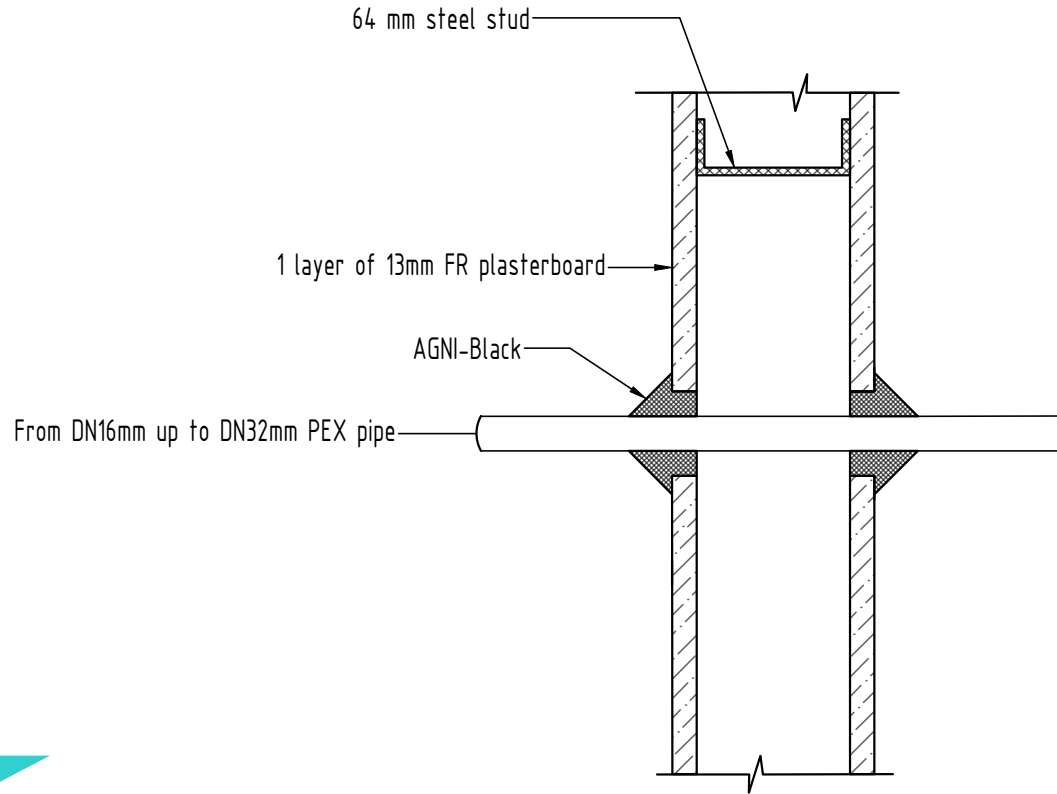
Date	15.02.2025
------	------------



FIRESTOP CENTRE

Authorised New Zealand Distributor
Ph (09) 483 4000 www.firestopcentre.co.nz

AGNI-Black in 1 x 13mm Plasterboard Wall or 90mm Concrete/Masonry/Block Wall PEX Pipe 16-32mm Max FRR -/60/60



System ID# FC887

Technical Information

Substrate	<ul style="list-style-type: none"> • Min. 64mm timber or steel stud wall with a minimum of one layer of 13mm (or greater) FR plasterboard on each side, with or without insulation. • Min. 90mm concrete wall
Service range	From DN16 up to DN32mm PEX pipes
Annular gap	15.8 - 25.85 mm
AGNI-Products	AGNI-Black
Protection installation	Coned - both sides of the wall

Compliance Information

Standards	AS1530.4-2014, AS4072.1-2005
FRR/FRL	DN16mm -/60/60 DN25mm -/60/45 DN32mm -/60/-
Reference	PF24143



8 Clare St Bayswater
VIC 3153, AUSTRALIA
www.agnitek.com.au

Disclaimer

Agnitek reserves the right to modify product specifications without prior notice due to its ongoing research, development & certification programme. The information in this document is provided in good faith and is intended for guidance purposes only. Any accompanying drawings are solely for illustrative purposes. Since Agnitek cannot oversee installation methods or ensure site conditions, no warranties, expressed or implied, are intended regarding the products' actual performance. We do not accept liability for any loss, damage, or injury from using this information. Please take a look at the test reports displayed on a relevant AGNI-System webpage for all compliance specifics.

Date 15.02.2025